


The image shows the interior of a classic Volvo car. The steering wheel is a three-spoke design with a silver center cap featuring the Volvo logo. The dashboard is a light green color with a speedometer and several gauges. The text "VOLVO" is visible on the dashboard. The overall aesthetic is clean and functional, characteristic of mid-20th-century Scandinavian design.

Skandinavische Tradition und moderne Prozesse – das Projekt „World of Volvo“

About Henning Larsen

At Henning Larsen, we define
beauty by the lasting impact
of our design.

A background image of blurred purple flowers, likely lavender, with a soft bokeh effect. The flowers are in the foreground and middle ground, creating a sense of depth and texture. The colors range from deep purple to light lavender, set against a dark, muted green background.

Our vision is to create sustainable societies where people and nature flourish.



We were founded in 1959 by Danish architect, Henning Larsen.

We have completed and ongoing projects in more than 30 countries.

We are 600+ architects, urban planners, landscape architects, sustainability engineers, interior architects, lighting designers, and graphic designers.

We are spread across 20 studios in eight countries: Australia, Denmark, Germany, Hong Kong, Norway, Singapore, Sweden, and United States.



Our most famous projects



Harpa Concert Hall & Conference Centre - Iceland



Moesgaard Museum - Denmark



The Royal Danish Opera - Denmark



The Wave in Vejle - Denmark



Siemens Global HQ - Germany



Kiruna City Hall - Sweden



Nordea Bank HQ - Denmark



SDU Kolding Campus - Denmark



Gentofte Central Library - Denmark



Malmö City Library - Sweden



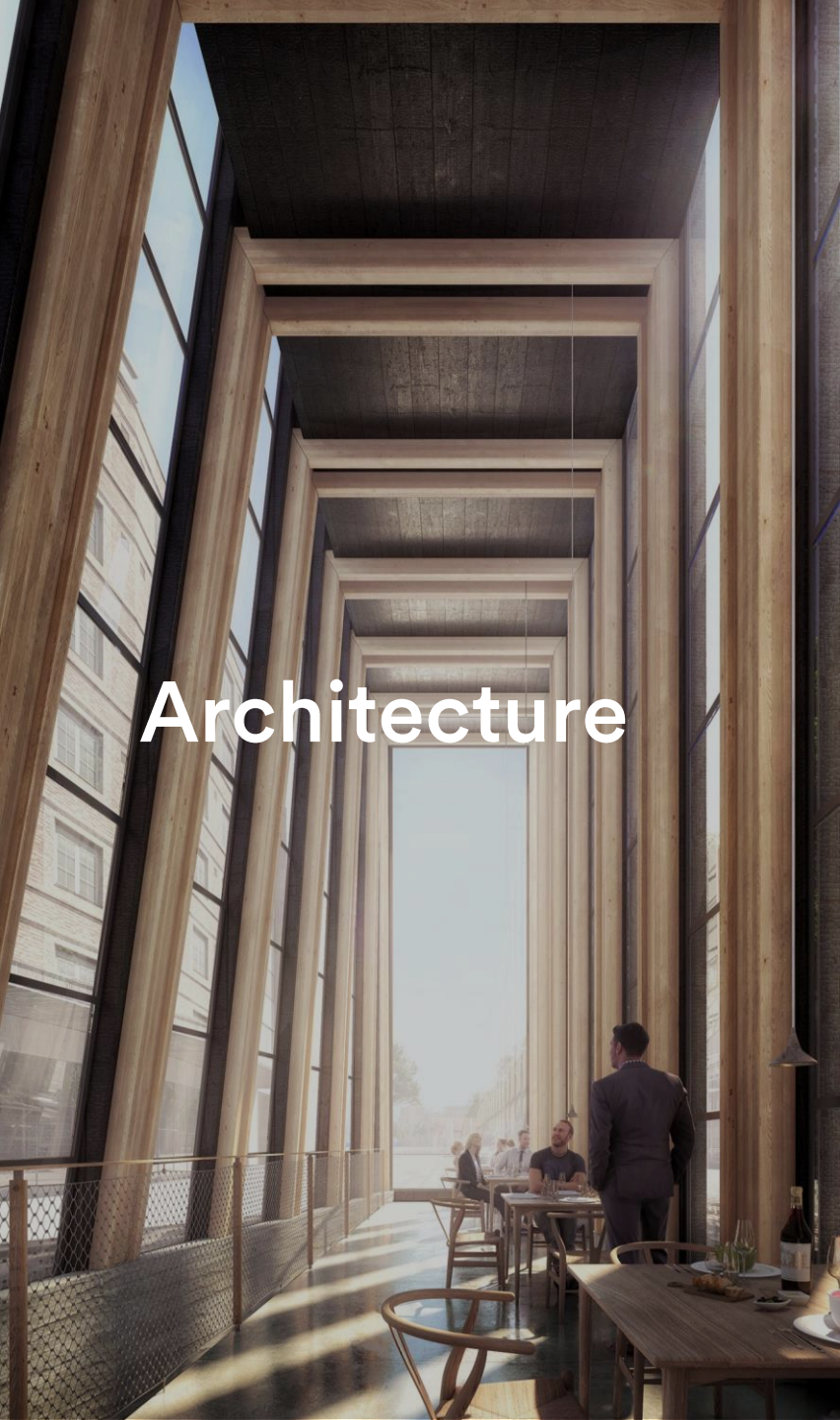
CBS Dalgas Have - Denmark



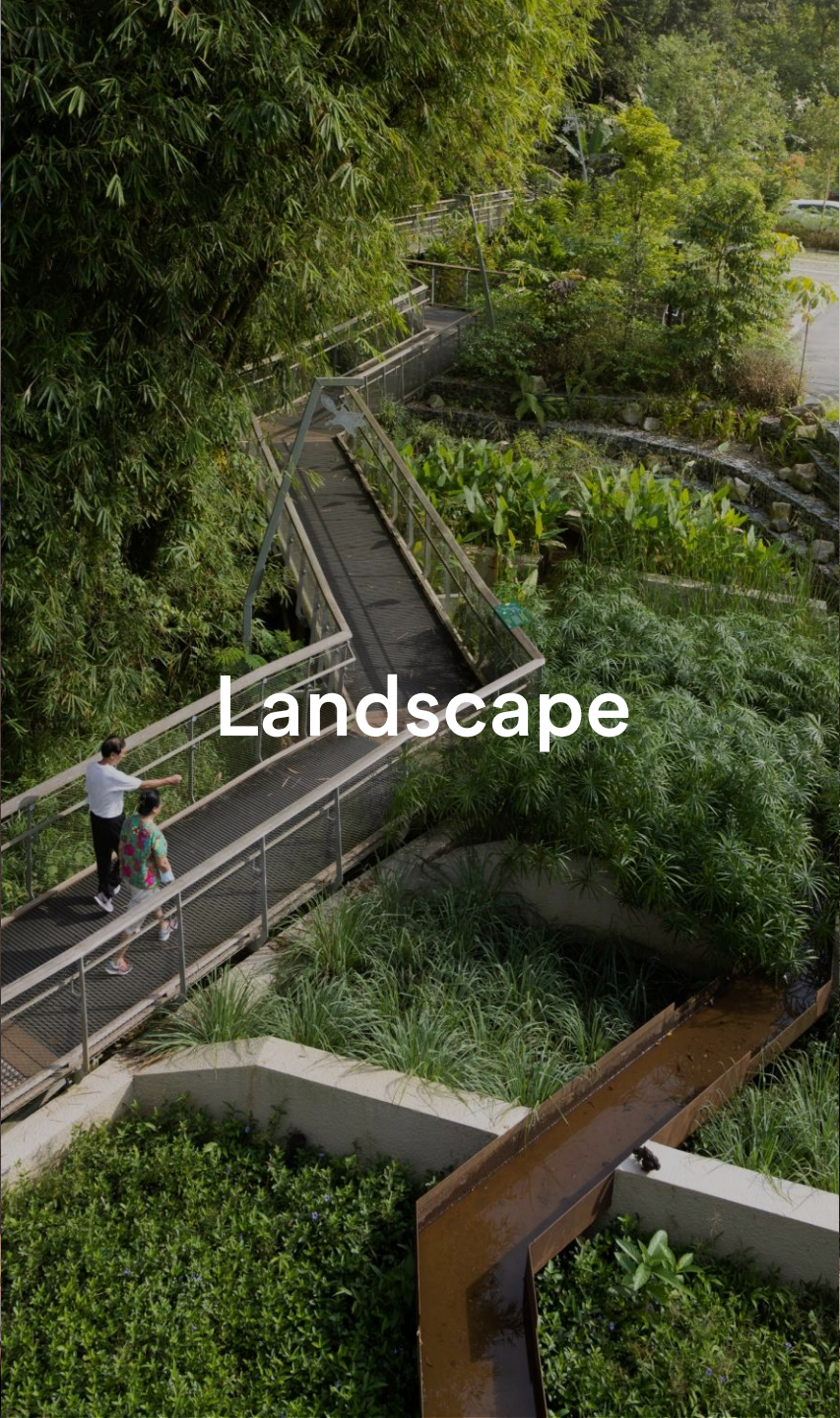
Ministry of Foreign Affairs - Saudi Arabia

Our most recent projects





Architecture



Landscape



Urbanism

Our partnership with Ramboll strengthens our ability to create sustainable projects and effective solutions to some of the most demanding challenges facing cities and communities around the globe.

Large Numbers – Big Impact

40%





2050

> 70%



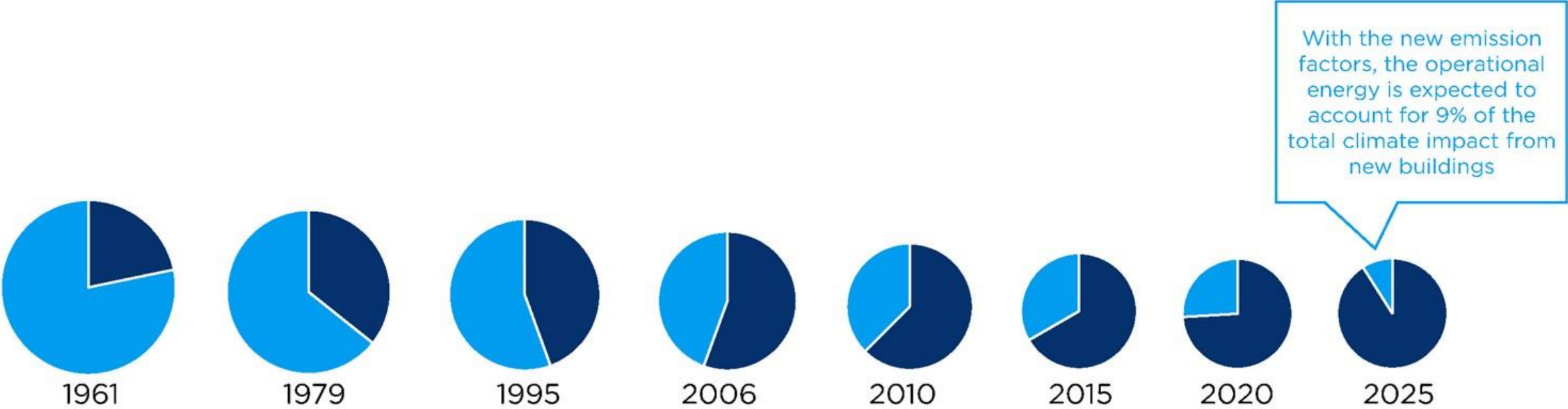
a new city for 1.5m people
every week

Construction materials
contribute to 11% of CO₂
emissions.

Concrete = 8% of global CO₂

Source:
www.worldgbc.org

Operations vs Materials



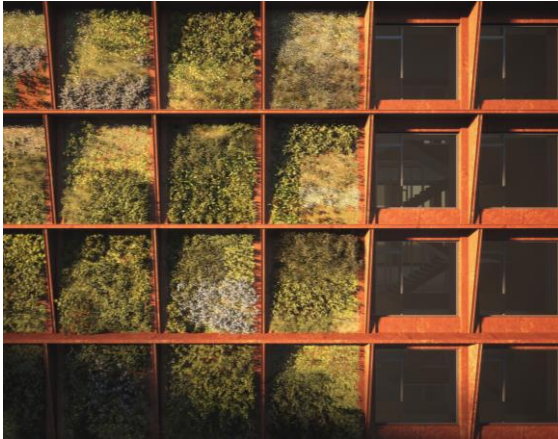
Share of **embodied** and **operational** climate impact from new built in Denmark

Source:
Rambøll – LCA Whitepaper

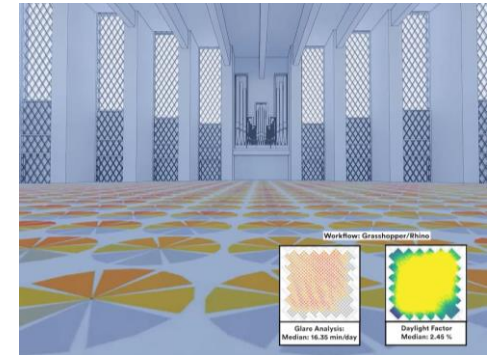
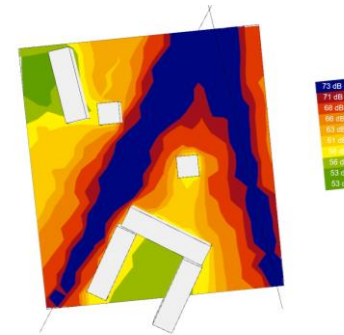
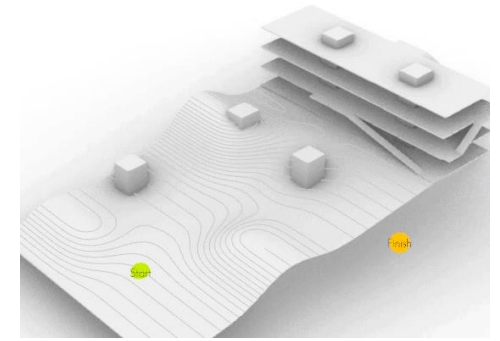
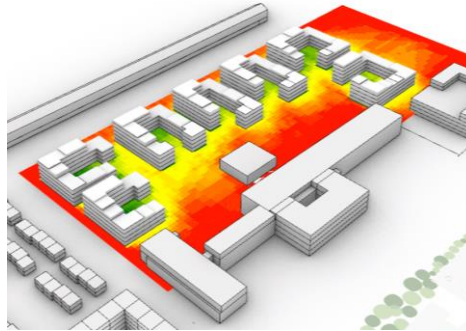
Design with impact



A culture of curiosity

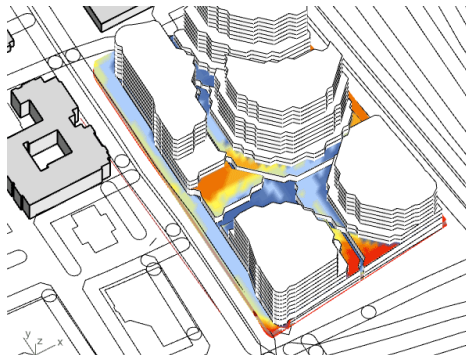


Applied innovation



Our digital toolkit enhances creativity through innovation. This isn't an afterthought – this is integrated in our design process from the onset.

1. Energy design
2. Generative design
3. Smart-path findings
4. Acoustics and virtual soundscapes
5. Urban noise simulations
6. Daylight and artificial light
7. Microclimate analysis
8. Post-occupancy evaluations
9. Embodied carbon modelling



Changing our footprint - exhibition



BRICK

Giving old materials new life

Can we rethink the current methods of renovation?

Upcycled and biobased

Being is an intrinsically spatial experience

Grouping materials from the right places

Changing our footprint - exhibition



Tirelessly learning by doing

Biobased, scalable, and CO₂ sequestering

Time for concrete change

If materials could speak...

As we increasingly feel the effects of climate change on our planet, it is becoming crucial that we reconsider the materials of our craft.

Wood and other renewable bio-based materials offer great alternatives. As trees absorb carbon dioxide throughout their lifetime and release it in decay, timber construction can help to reduce the amount of carbon dioxide in the atmosphere by prolonging the carbon cycle.

This means meticulously considering the many individual scales at which we interact with wood, from tree trunks and bark to cross-laminated timber, woodchips, fibers, and even paper. With circularity and 'cascading use' as clear priorities, we must extend the material life cycle of wood and draw out its capacities for carbon storage.

Timber is also far lighter than other building materials and is thus much easier to transport. Compared to concrete, it requires up to 5 times fewer transportation carriers!

Believe it or not, timber construction will not burn, break, or rot, and thankfully, when selecting certified wood, sustainable forestry is assured.

What if we adopt temporality into our designs?



Let's talk about it

What does it take to carry out an ambition?



Changing our footprint - exhibition



Changing our footprint - exhibition



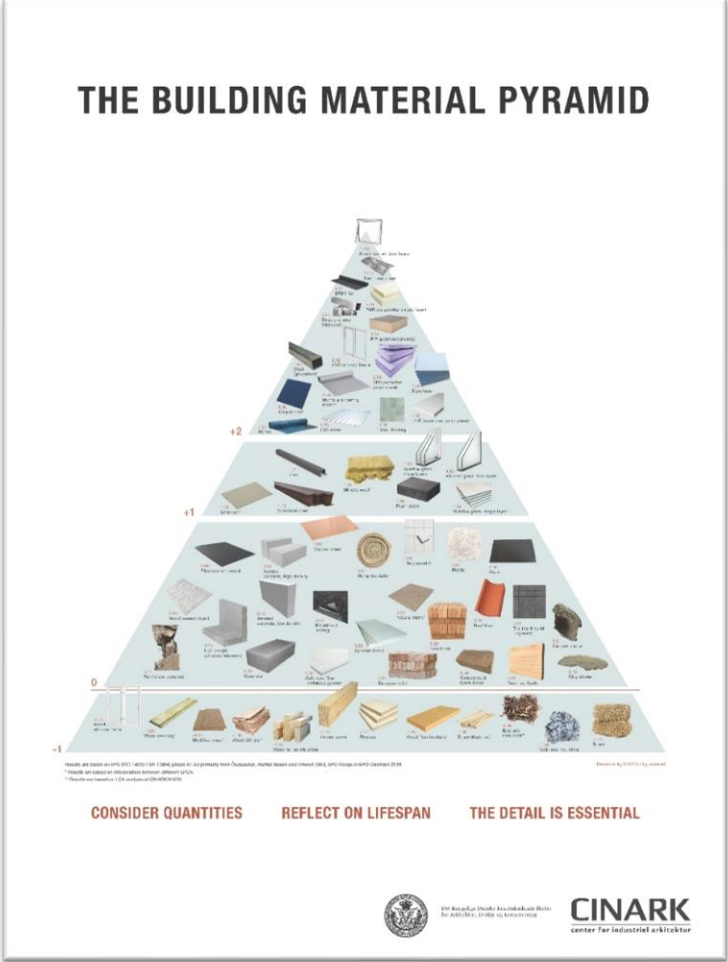
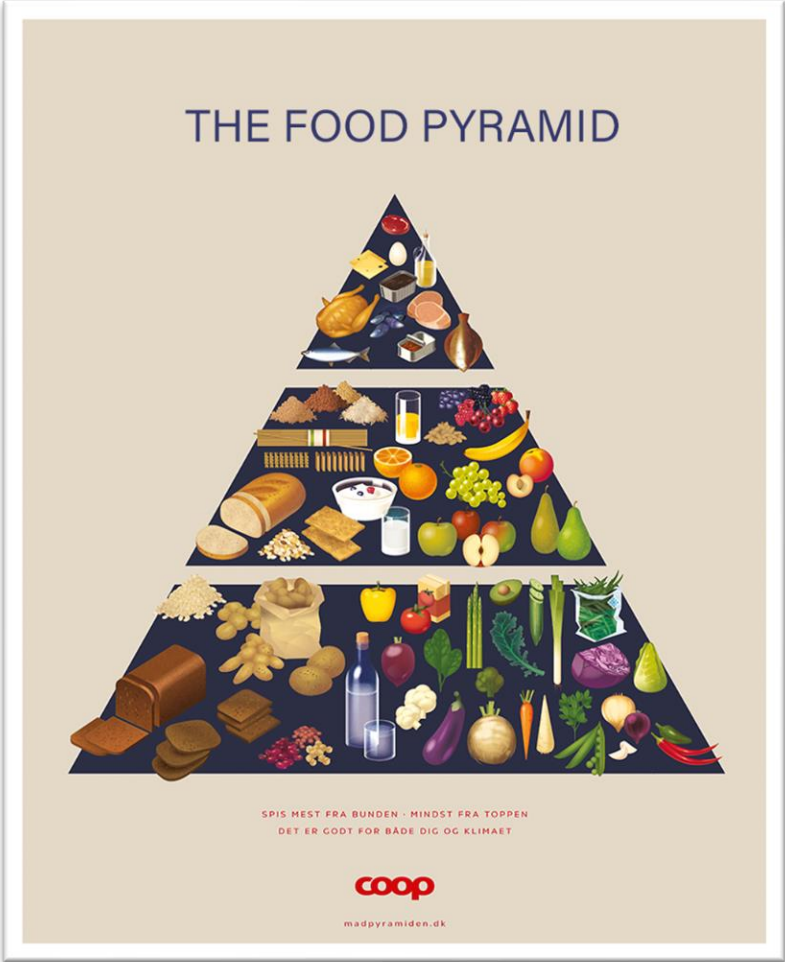
Biogenic materials



Growing matters: Mycelium Pavillon, Milano Design Week 2025



The Pyramid Theory



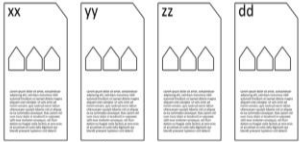
+



recipies

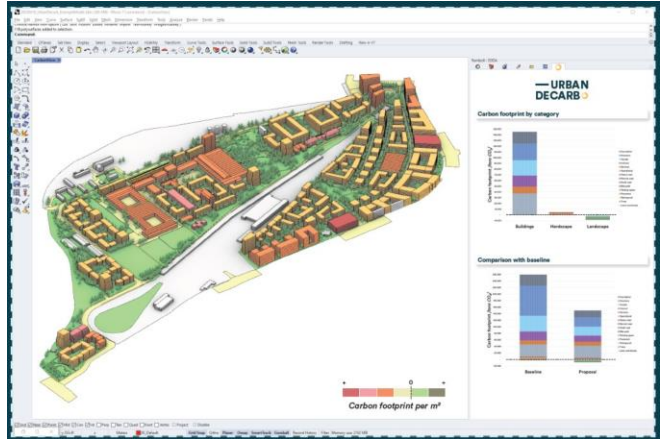


+



designguides

It is a Journey
<https://henninglarsen.com/publications>



PLANT A SEED

Designing with wood and biobased materials.



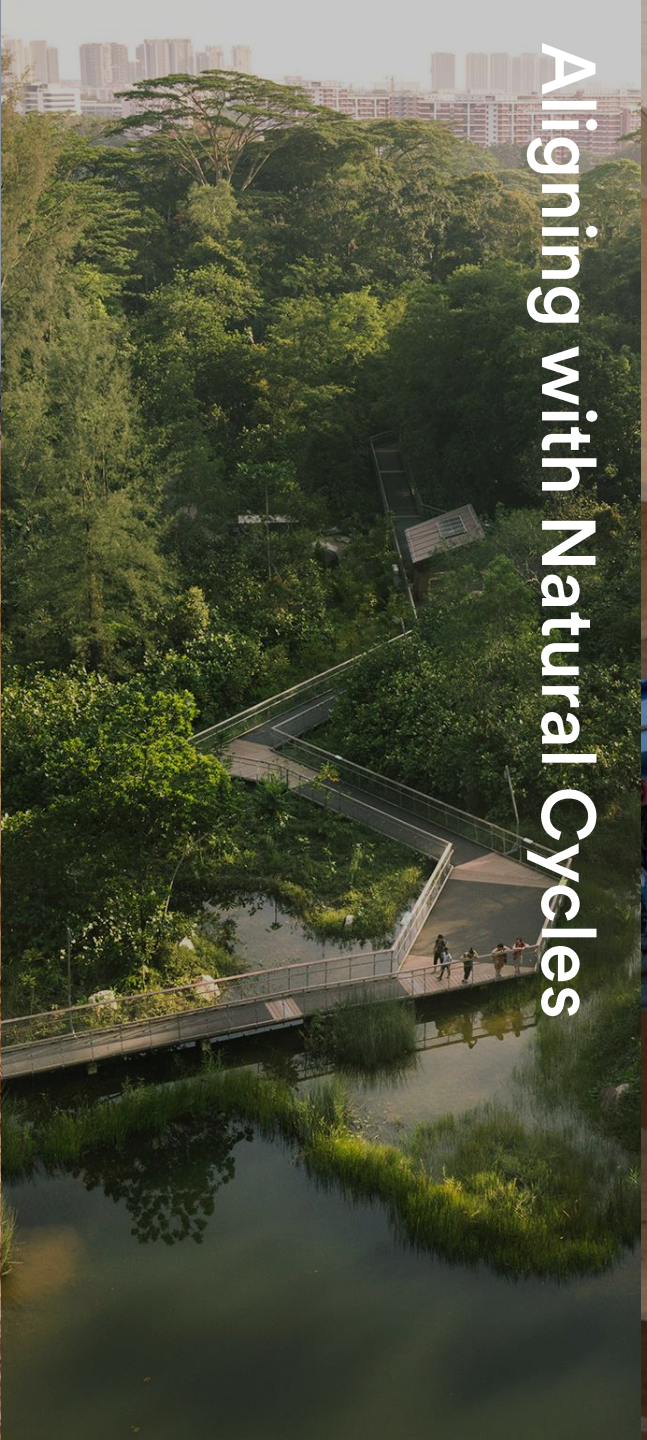
Henning Larsen



Thriving Communities
Today & Tomorrow



Resource Management & Circularity



Aligning with Natural Cycles



Rethinking our Carbon Footprint

Scaling innovation



We're on a path of scaling up the use of biogenic materials – taking our learnings from Feldballe School, a project of 250 m², to Bestseller's 155,000 m² logistics center in the Netherlands.

Scaling innovation- Feldballe School

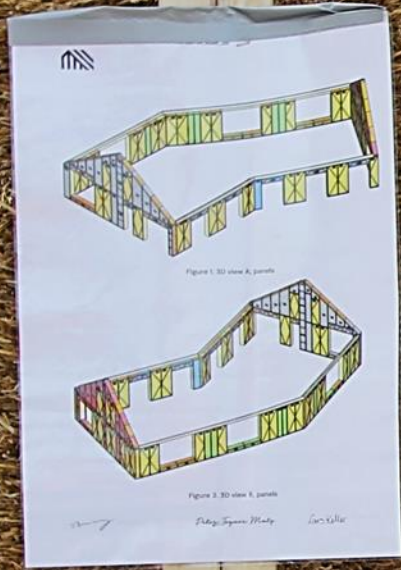




The children must learn that
we can do it differently



Materials that naturally absorb and store CO₂ in the carbon cycle



Simple design principles that enable the dismantling and reuse of building components in the future



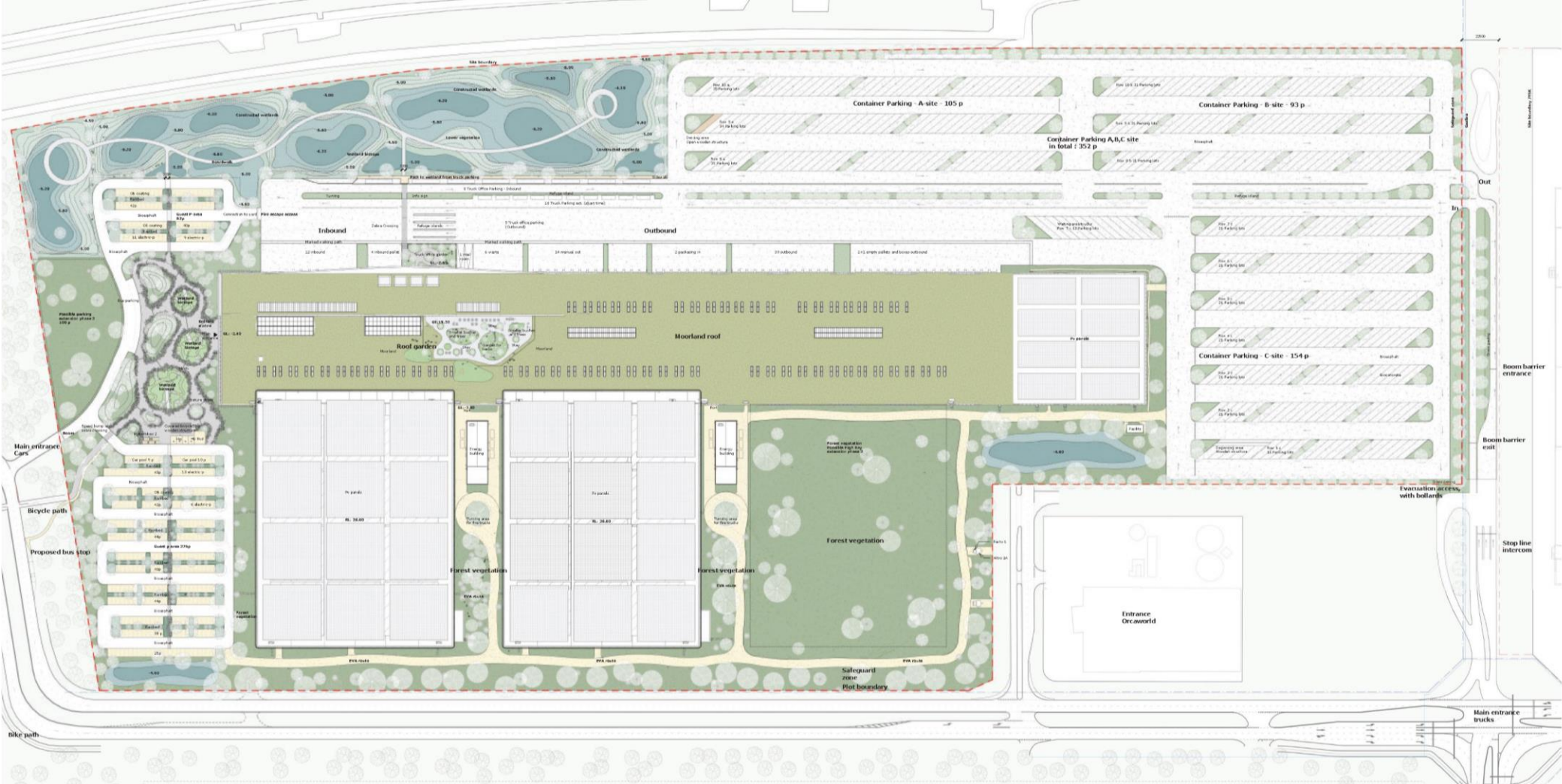


Deep dive

Logistics Center in Holland / BESTSELLER



Siteplan



The Wetland



The central stair



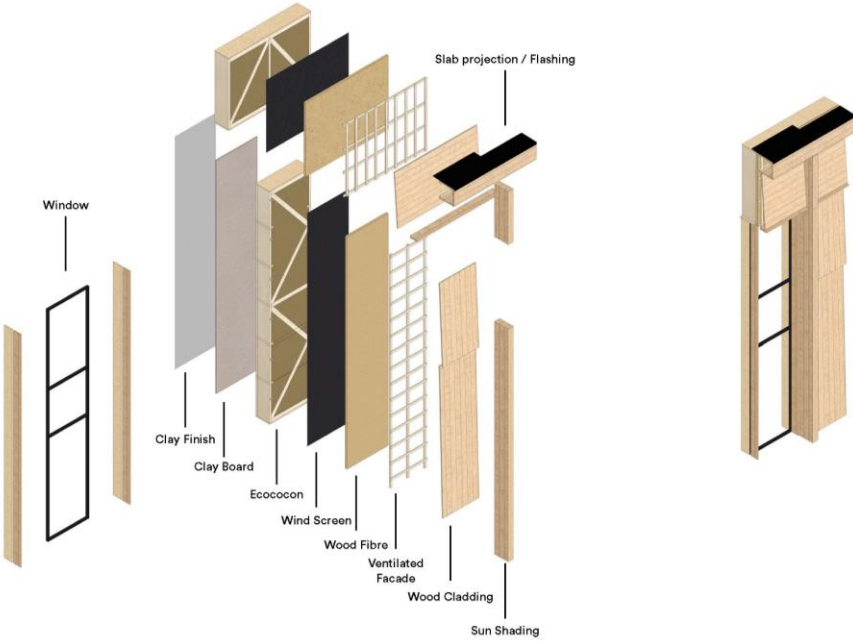
The office area



The MHE area

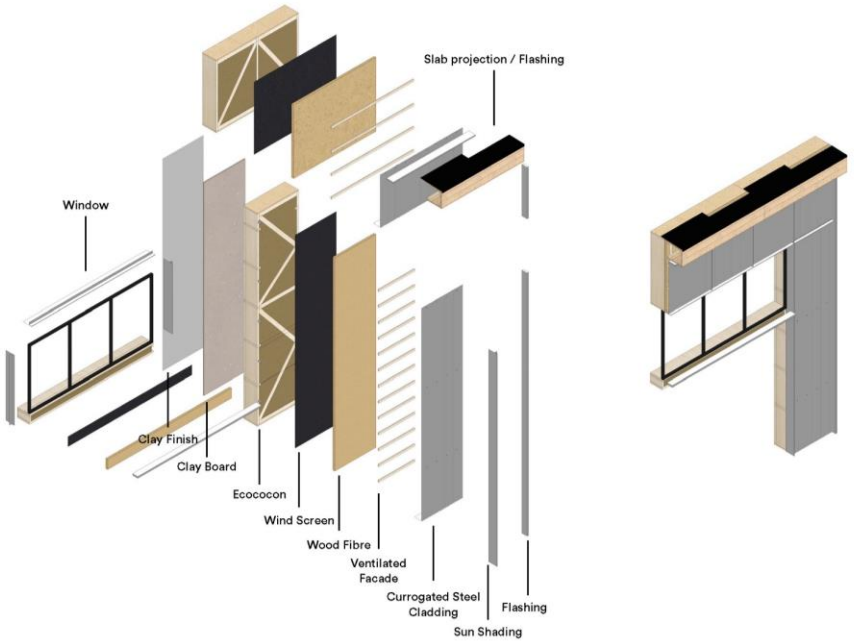


Façade buildup



Terminal Upper Floors:

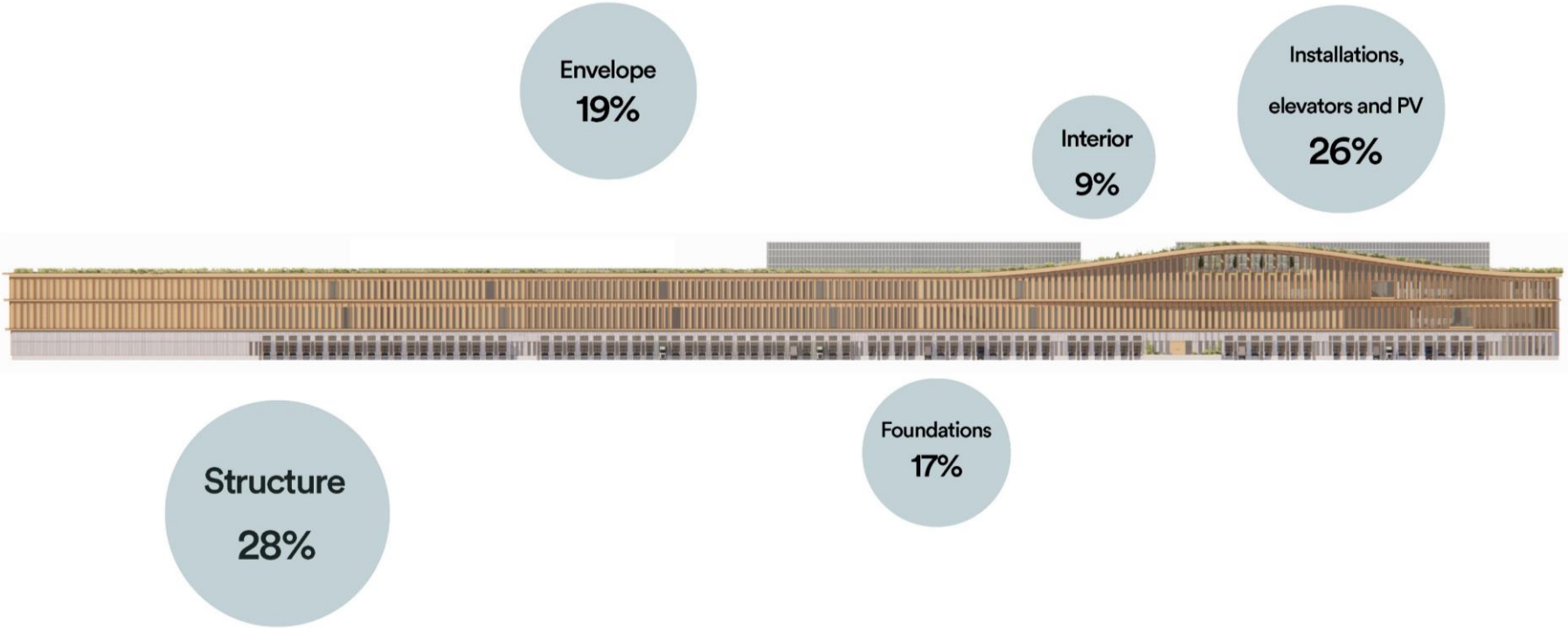
On the wooden facades the cladding is angled to incorporate necessary requirements of rain water handling into the design and minimize additional elements and obstructions in the expression to maintain the calmness of the facade.



Terminal Ground Floor:

The corrugated steel cladding of the ground floor is used for its durability and maintenance properties in the industrial context. The corrugation gives the facade a certain refinement and relates to overall expression of the building's facade.

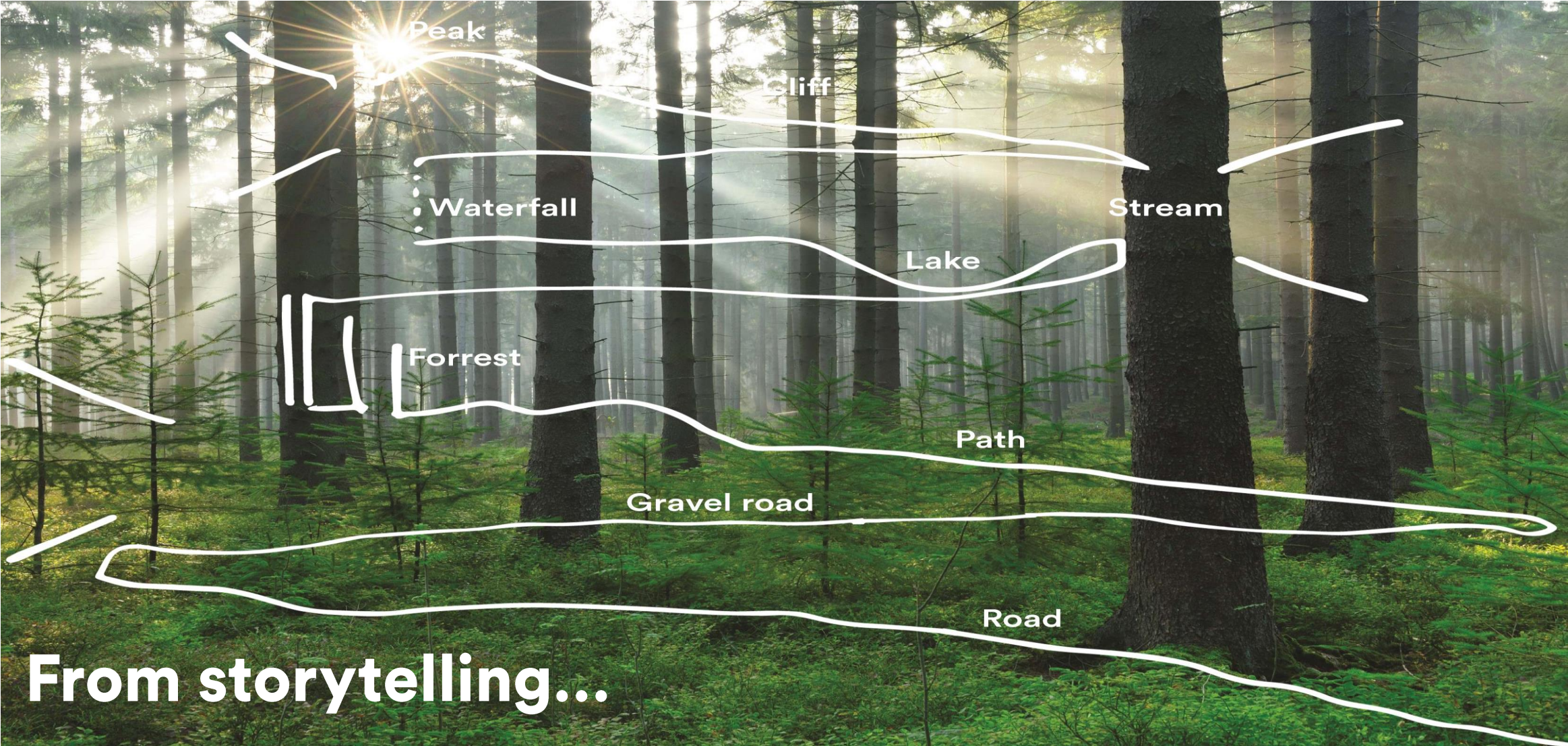
Carbon footprint by major components



Deep dive

WORLD OF VOLVO, GOTHENBURG, S

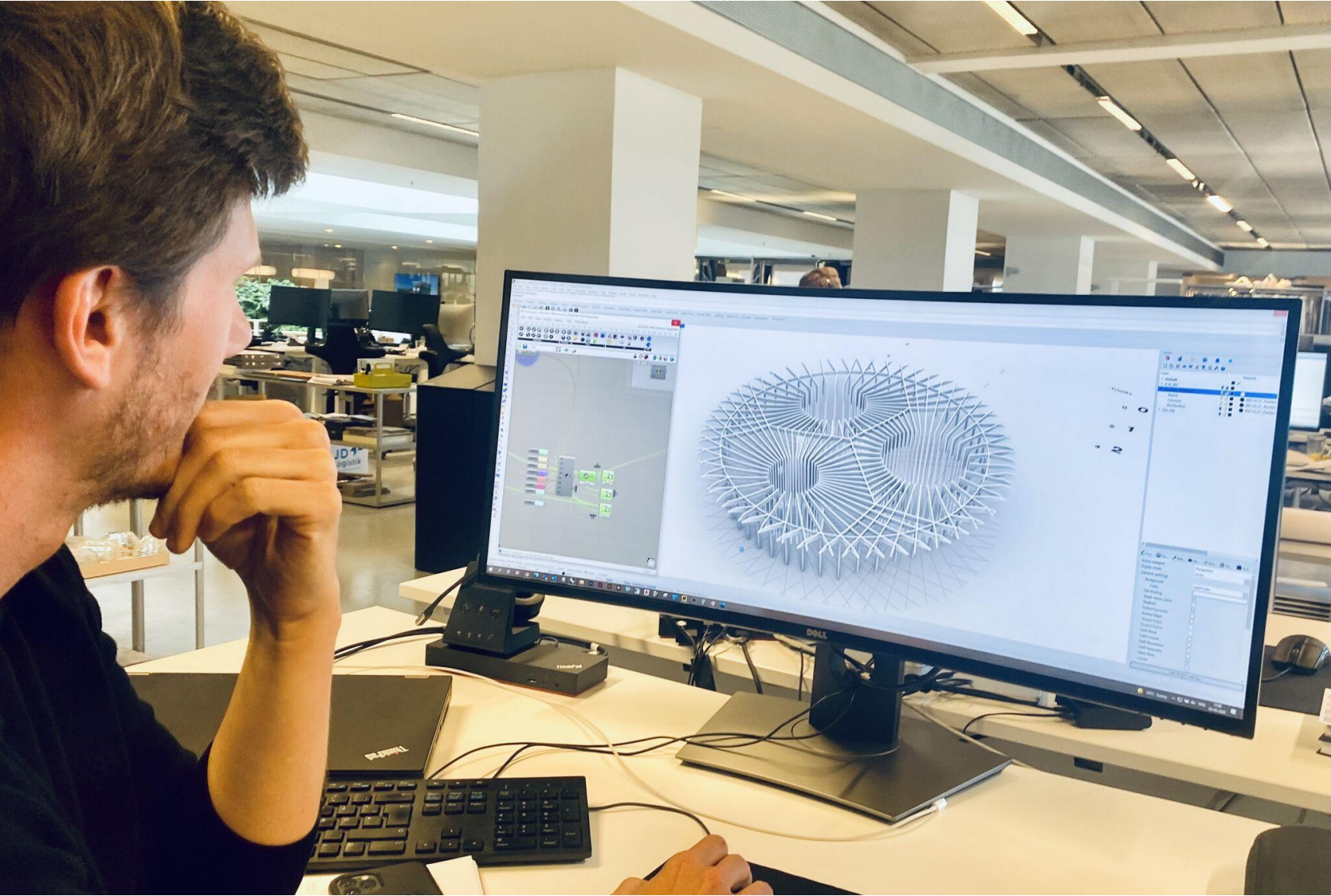




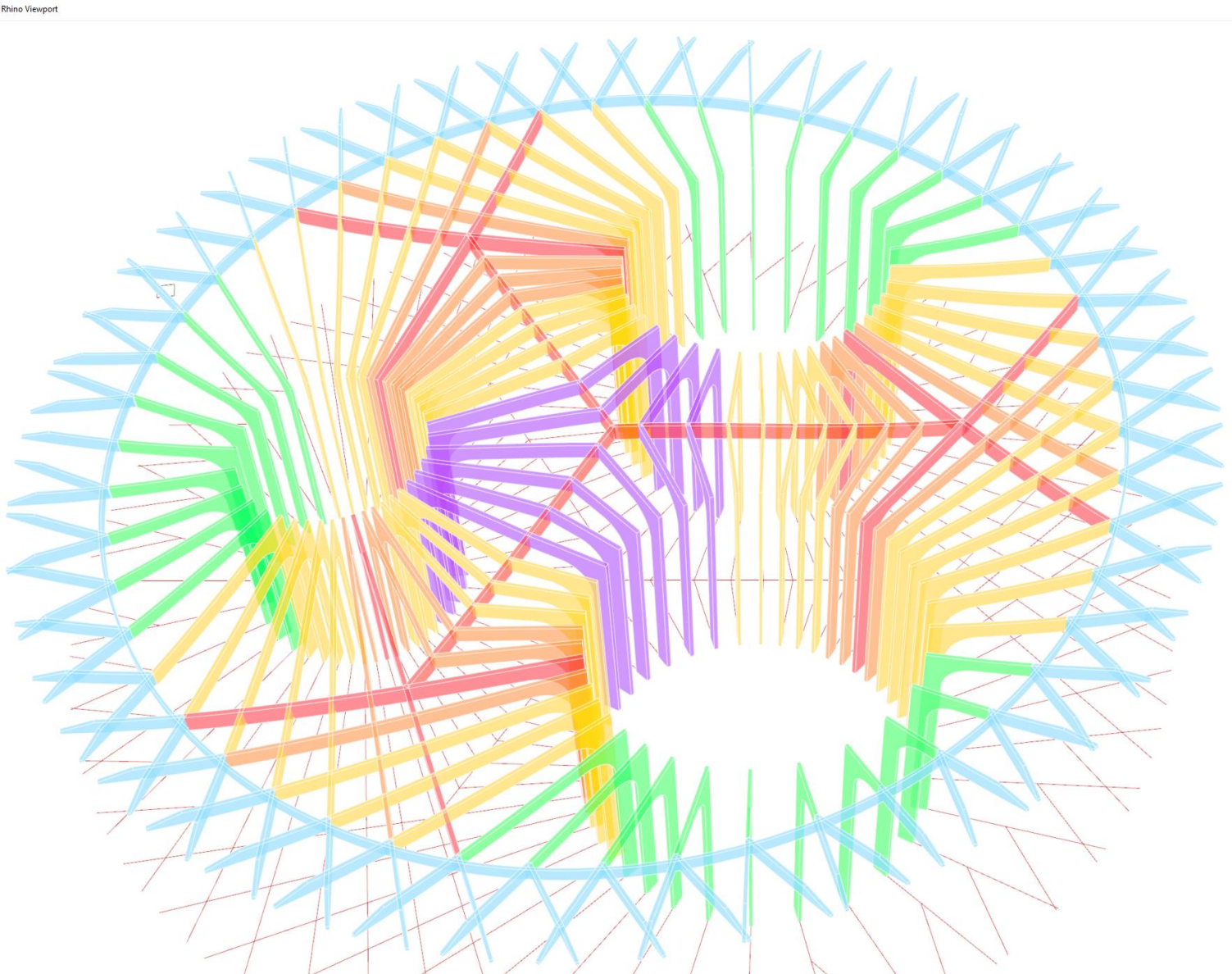
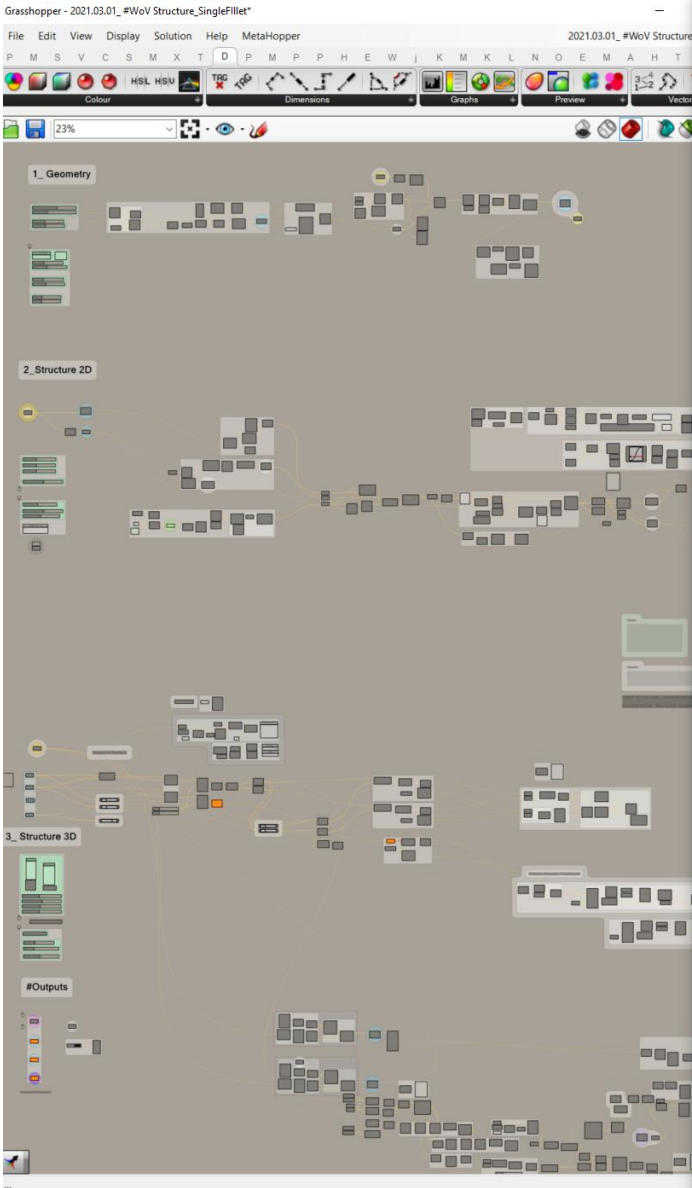


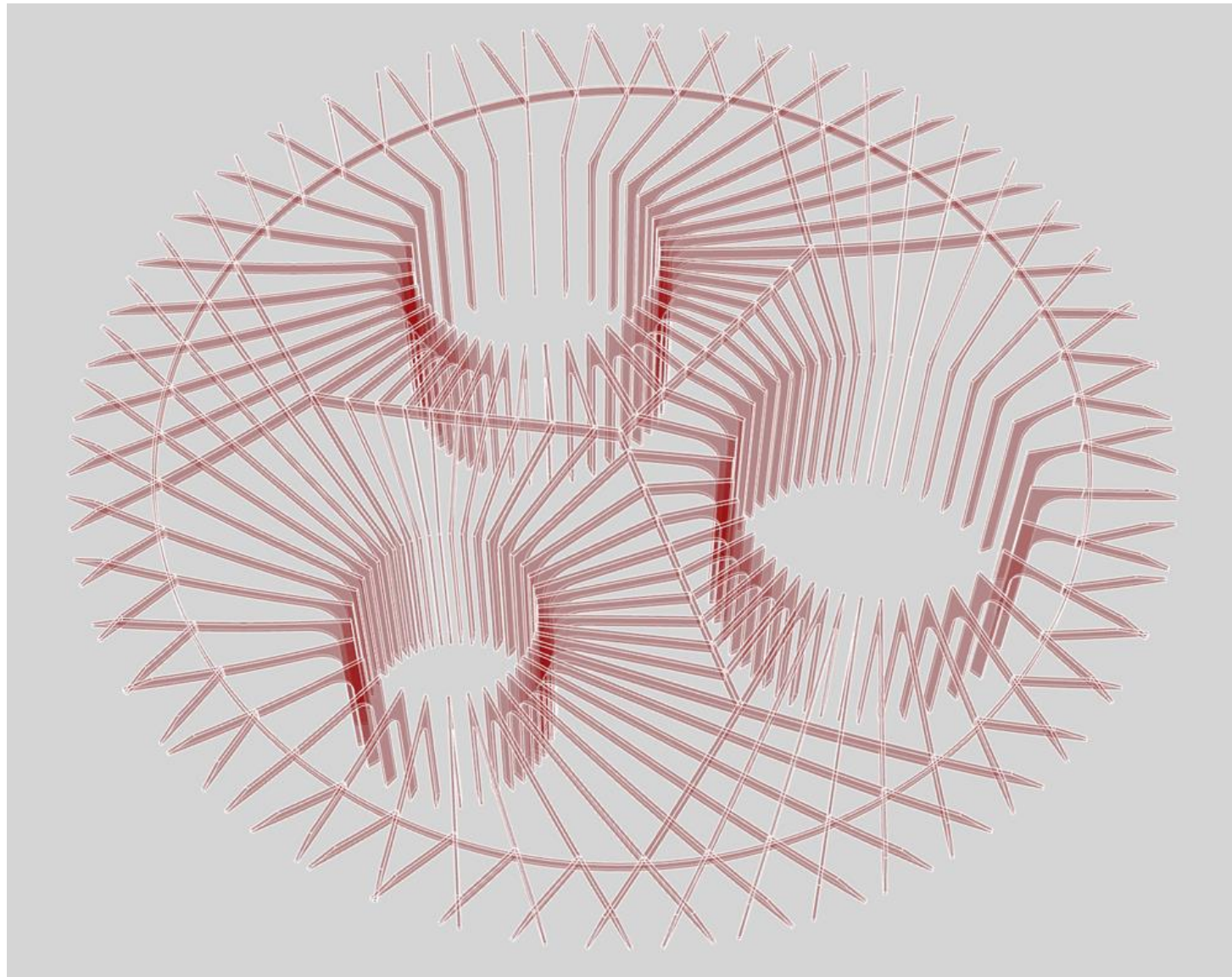
...to architectural experience





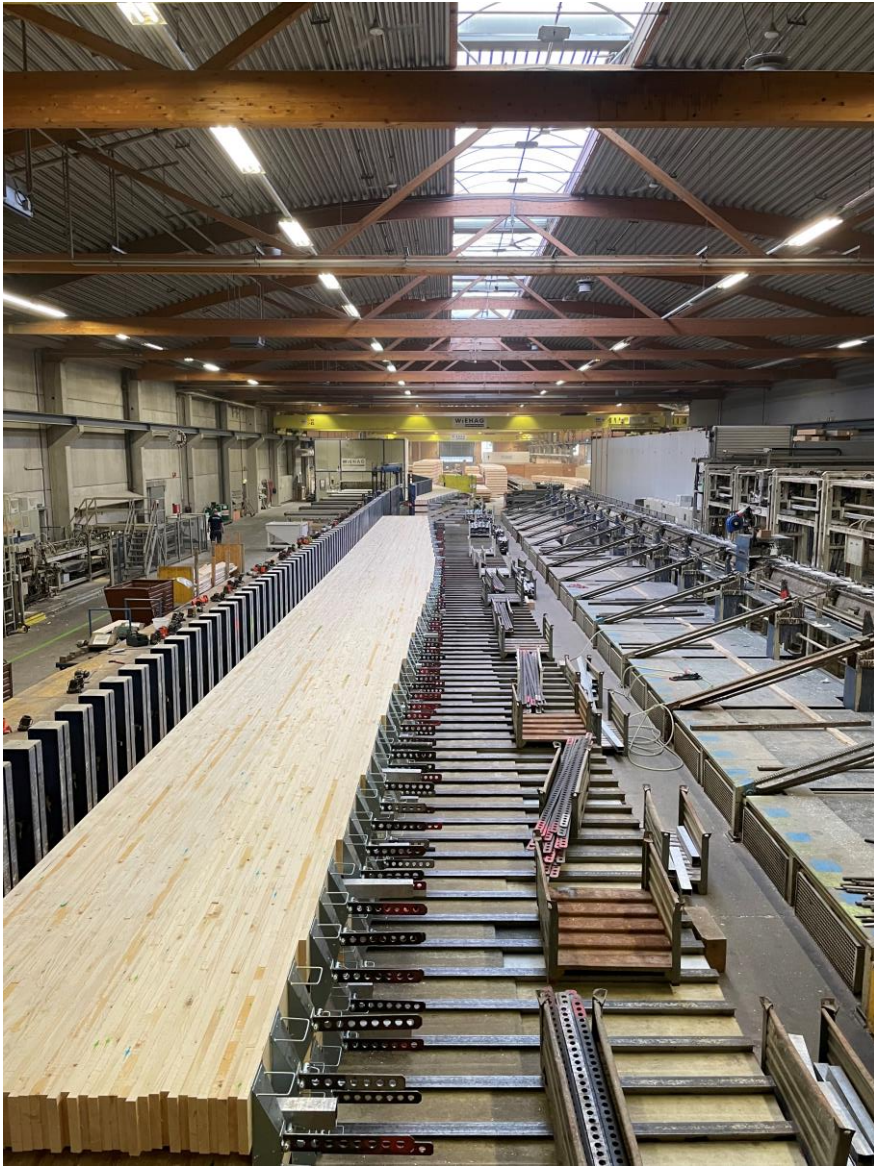
World of Volvo



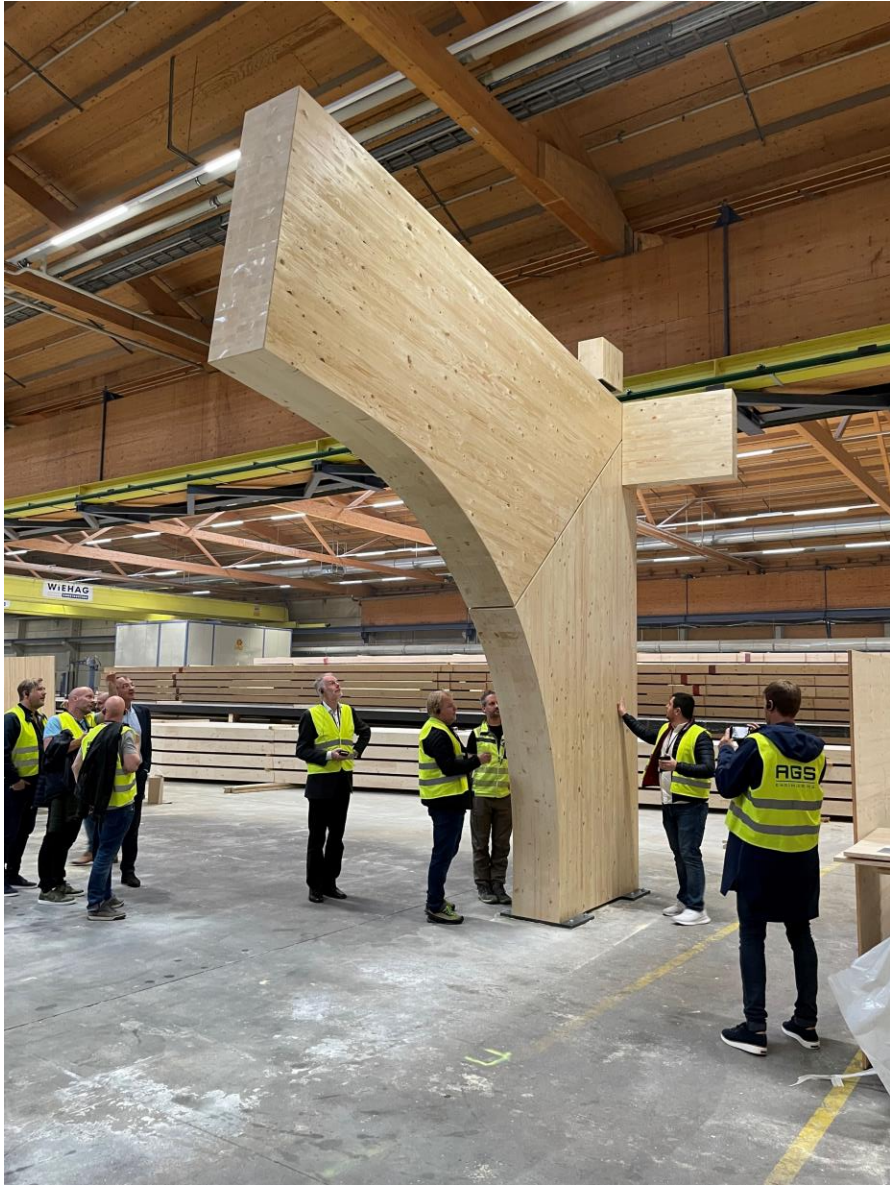


To production...









World of Volvo



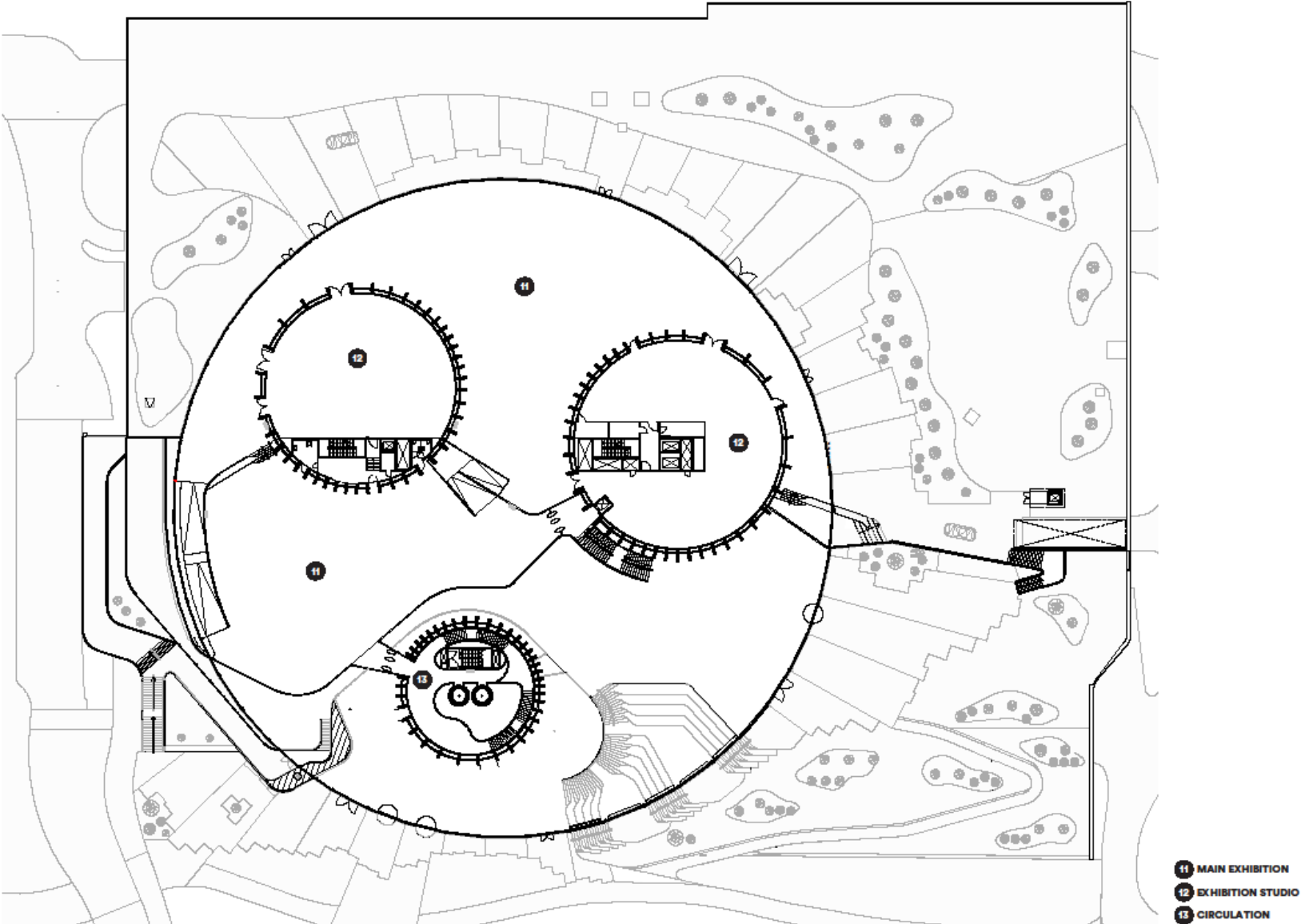
To transport...



To construction...









To experience...









Thank You

Werner Frosch

wf@henninglarsen.com
www.henninglarsen.com



<https://www.linkedin.com/company/henning-larsen/>



<http://www.facebook.com/Henninglarsenarchitects>



@henninglarsenarchitects



@hlarchitects

